

EVERDIGM ROCKTOOLS ROCKY-MQ 6.5" Hammer



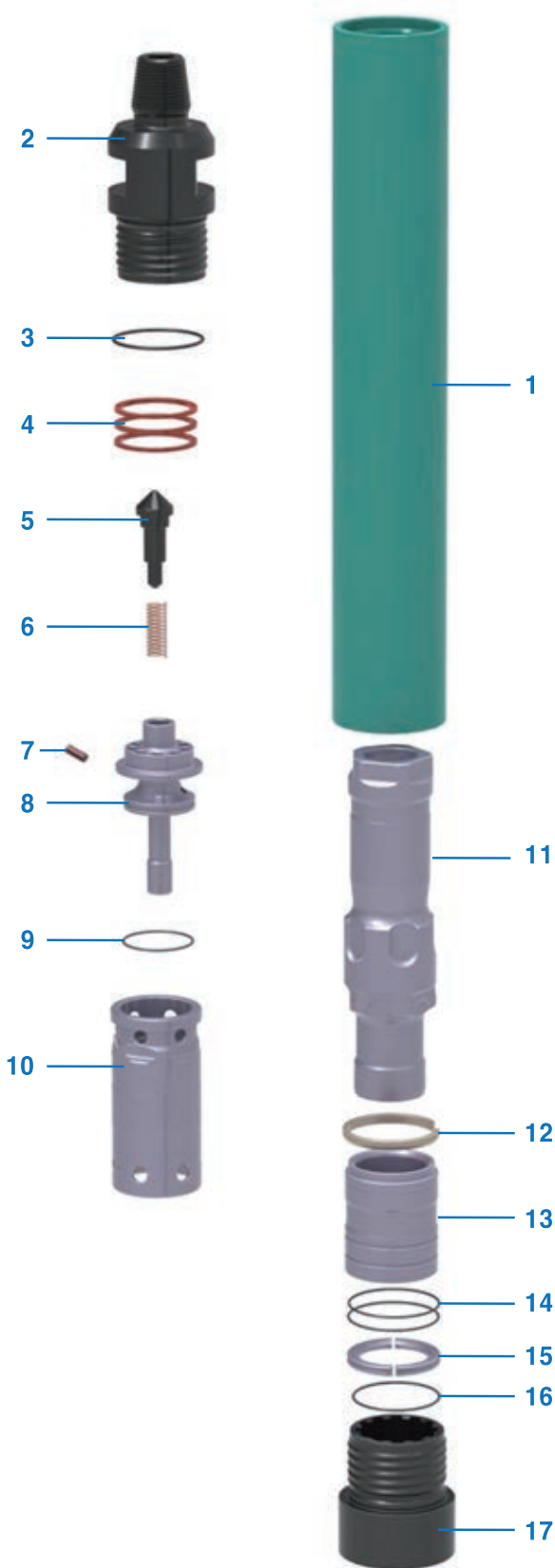
Everdigm Rocktools ROCKY-MQ 6.5" hammer is optimized for mining site. Its high frequency design and optimized airflow deliver superior penetration rate. Everdigm Rocktools ROCKY-MQ 6.5" hammer will assure of high performance, exceptional reliability and dependable support.

- Rocky MQ 6.5's without foot valve design ensures higher blow rate and faster drilling than conventional hammer.
- Optimized air consumption will help to reduce fuel cost. (10~15% less)
- Outstanding engineering and precise manufacturing.
- Efficient chamber volumes and piston cycle allow to achieve the best performance.
- Best forged alloy steel with nitriding heat treatment will assure for longer-life & durability.



SPECIFICATIONS

ROCKY-MQ 6.5" Hammer



PART LIST (Standard)			
ITEM	DESCRIPTION	Q'TY	PART NO.
1	WEAR SLEEVE	1	RT425-0003
2	BACK HEAD	1	RT425-0004
3	O-RING	1	AN-349
4	DISC SPRING	3	RT425-0005
5	CHECK VALVE	1	RT425-0013
6	COIL SPRING	1	RT425-0012
7	PLUG	1	RT425-0014
8	AIR DISTRIBUTOR	1	RT425-0006
9	O-RING	1	AN-238
10	CYLINDER	1	RT425-0007
11	PISTON	1	RT425-0002
12	PISTON RETAIN RING	1	RT425-0008
13	BEARING	1	RT425-0009
14	O-RING	2	AN-245
15	BIT RETAIN RING	1	RT425-0010
16	O-RING	1	AN-243
17	CHUCK	1	RT425-0011

PART LIST (Slim)			
ITEM	DESCRIPTION	Q'TY	PART NO.
1 - 1	WEAR SLEEVE	1	RT425-0016
2 - 1	BACK HEAD	1	RT425-0017
17 - 1	CHUCK	1	RT425-0018

HAMMER SPECIFICATIONS		
Hammer Model	Rocky-MQ 6.5" STD	Rocky-MQ 6.5" SLIM
Length (w/o drill bit)	1,091mm	1,091mm
Outside Diameter	146mm	141mm
Weight (w/o bit)	101kg	91.5kg
Cylinder Bore	118mm	
Piston Stroke	95mm	
Piston Weight	25kg	
Hole Sizes	156mm~203mm	152mm~203mm
Wrench Size	A/F 95mm	
Bit Shank	QL60 / QLX60	
Connection	Std. API 3-1/2 REG PIN	
Working Air Pressure	150psi ~ 400psi	
* The Rocky MQ-6.5" piston oscillates at 1850 bpm at 350 psi (24bar).		

Air Consumption Chart	PSI	BAR	CFM	Cu. Mtr/min
	150	10.3	265	7.5
	200	13.8	415	11.8
	250	17.2	560	15.9
	300	20.7	705	20.0
	350	24.1	848	24.0
400	27.6	1,020	28.9	

FACTORY & HEAD OFFICE

300, Wanjusandan-5ro, Bongdong-Eup, WanJu-Gun, Jeonbuk, Korea.

TEL : +82-63-262-6900 / FAX : +82-63-261-4483

www.edrocktool.com / e-mail : edrocktool@everdigm.com