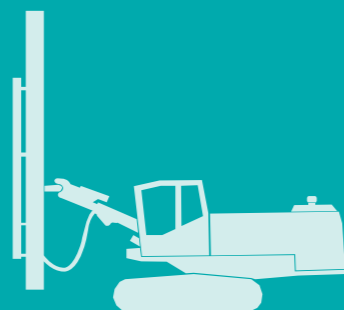


# T450

Top-Hammer Drill Rigs



BUILD THE FUTURE

# EVERDIGM

WWW.EVERDIGM.COM

#### Sales & Marketing

Room#1203, WoolimLion's Valley2,  
2 Gasan digital 1-ro, Geumcheon-gu Seoul, Korea  
Tel +82-2-801-0780 Fax +82-2-801-0899  
Email Drill@everdigm.com

#### Head office & Factory

49, Buyeong-gil, Jincheon-eup, Jincheon-gun,  
Chungcheongbuk-do, Korea  
Tel +82-43-530-3300 Fax +82-43-530-3426



[www.youtube.com/user/everdigm01](https://www.youtube.com/user/everdigm01)



[www.facebook.com/everdigmCo](https://www.facebook.com/everdigmCo)



# EVERDIGM

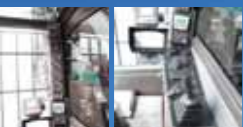
# T450

With advanced design and product support system, EVERDIGM blast-hole drill rigs ensure safety and comfort drilling work as well as rapid and simple maintenance through easy access to key components. The long reach scope of boom can increase drilling coverage range & productivity significantly and large capacity of air compressors and powerful rotation torque make EVERDIGM blast-hole drill rigs high productive machine in its class.

**Telescopic Boom**  
Longer & Wider working coverage

**LED Working Light**  
Secure your visibility during operation

**ROPS/FOPS cabin**  
Safe & spacious cabin for comfort drilling



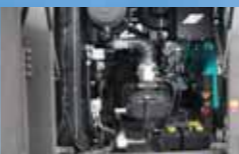
**Cabin**  
Electric / Hydraulic Joystick Control

**Dust Collector**  
Strong dust collector with 6 filters

**RM Auto rod changer**  
Innovative rod changing system operated by roller & magazine

**Drifter**  
Optimized Rock Drill for Powerful Performance

**Engine**  
User friendly Tier 2 Engine



**Compressor**  
Sufficient Air Delivery for Deeper Drilling

**Water Mist System**  
Prevent hole cumbing and bit jamming / Use with collaring system



## Specification

Recommended Hole Range	
Hole Diameter	75 ~ 115 mm (3" ~ 4.5")
Drill Steel (rod)	T45,T51-3,660 mm (12')
Hole Depth	25.6 m (84')

Drifter	
Model	EHD210
Impact Power	21 kW
Max. Impact Frequency	50 Hz

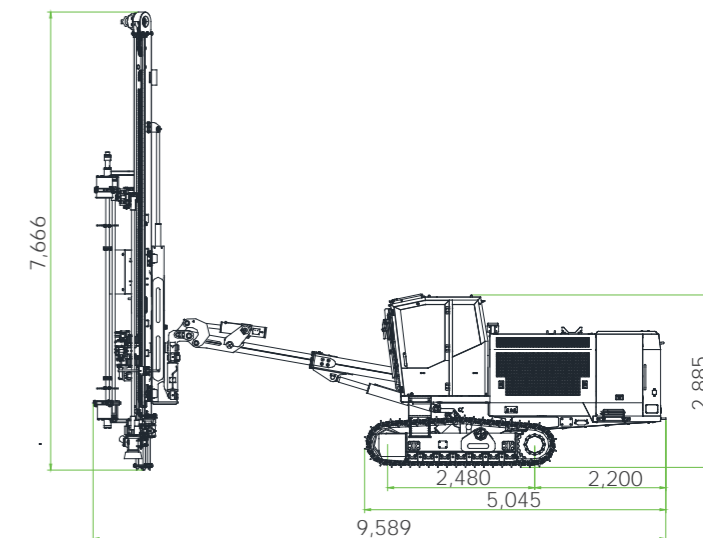
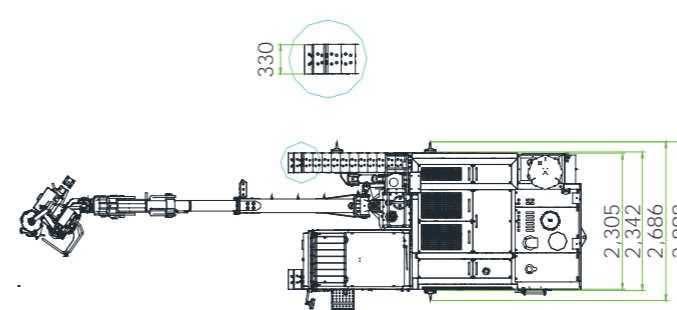
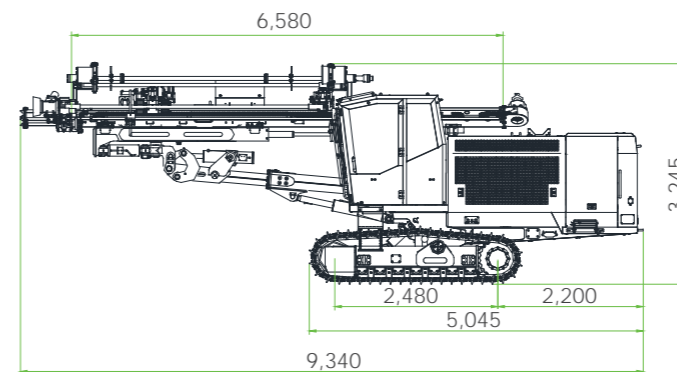
Engine	
Model	Cummins Tier 2, 6CTAA8.3C
Rated Output	194 kW (260 hp) at 2,200 rpm
Fuel Tank Capacity	460 ℓ

Compressor	
Free Air Delivery	8 m <sup>3</sup> /min (283 cfm)
Air Pressure	10.5 kg/cm <sup>3</sup> (152 psi)

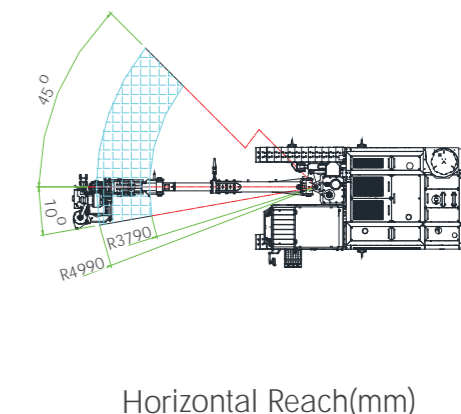
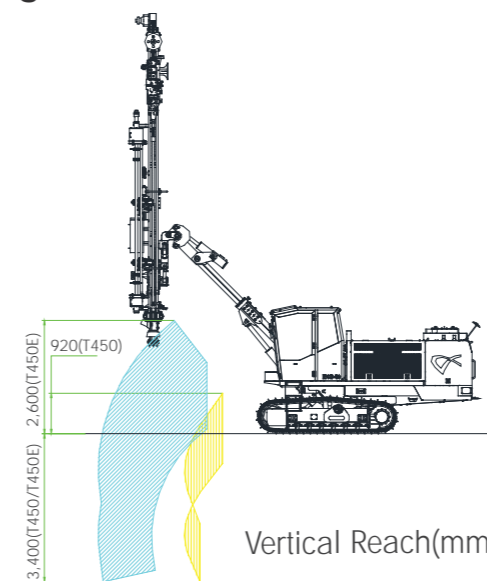
Boom	
Type	2 Stage Telescopic Boom
Length	4,300 mm
Swing Angle	L 10° / R 45°
Lift Angle	UP 45° / Down 25°

Dimension	
Weight	14,850 kg
Overall Height	2,860 mm
Overall Length	9,290 mm
Overall Width	2,305 mm

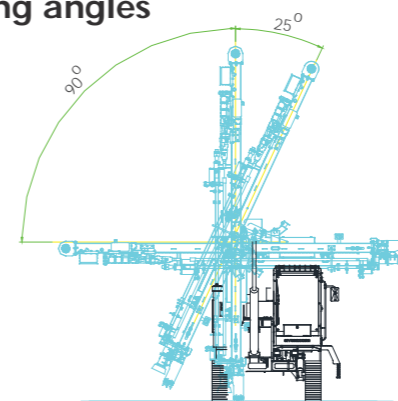
## Dimensions



## Coverage Areas



## Feed Swing angles



Guide Shell

## Feed Tilt angles

